



# Sissons

## SUPER SISCOLOX EMULSION PAINT



Premium Grade  
Emulsion Paint



Fungus Resistant  
For Interior & Exterior Use



No Added  
Lead & Mercury



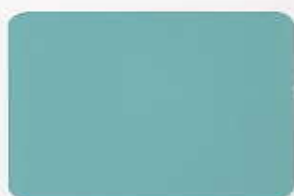


# SUPER SISCOLUX EMULSION PAINT

A top quality acrylic emulsion paint that provides excellent protection for all interior and exterior masonry surfaces which dries to give an attractive low sheen.



Langkawi Melon **9980**



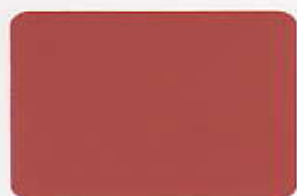
Persian Green **0337**



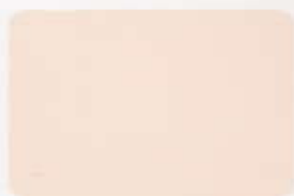
Eggshell White **9112**



Tangerine **0004**



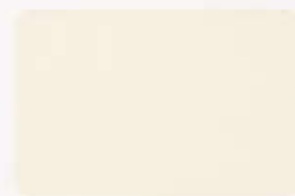
Terra Cotta **415**



Milkshake **0344**



Lime Burst **9973**



Straw **9978**



Cornsilk **9136**



Fairly Pink **0560**



Canary **0336**



Aquatint **5119**



Evergreen **6074**



Ballerina **0338**



Morning Star **9310**



Peach **9309**



Princess **0554**



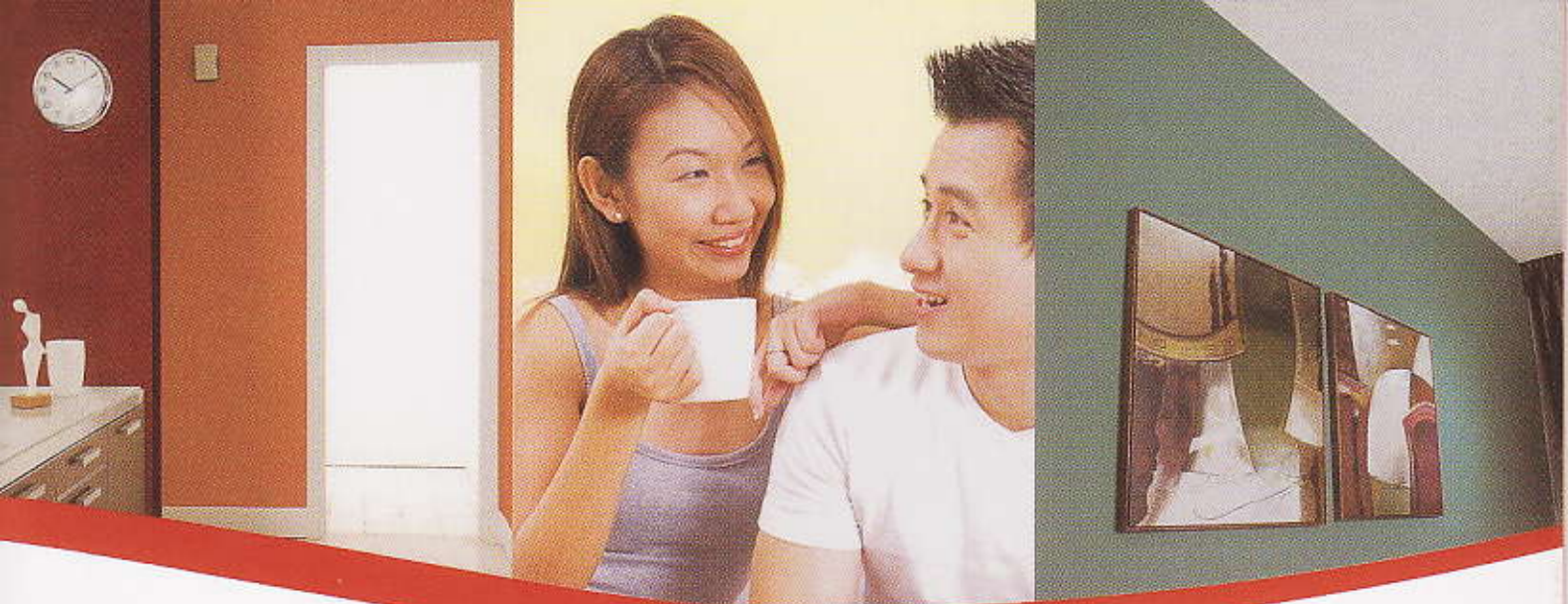
Brown Velvet **3045**



Tickle Rose **0553**

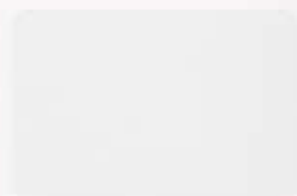


Also available in Super White 9102 & Black 9103.  
Juga terdapat dalam warna Super White 9102 & Black 9103.  
亦备有 Super White 9102 & Black 9103。



Copper Beech

**816**



Lavender White

**0561**



Daisy White

**0343**



Flame

**0005**



Golden Sand

**0555**



Golden Rain

**0557**



Hibiscus Pink

**9312**



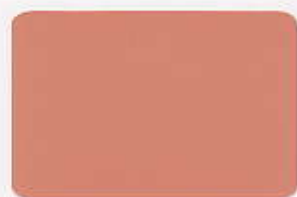
Aqua White

**0559**



Crescendo

**0329**



Matador

**9981**



Carnation White

**0558**



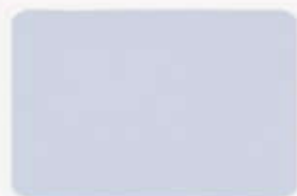
Vanilla White

**9190**



Apple

**606**



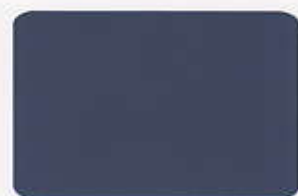
Northern Sky

**9974**



Heart Sateen

**0556**



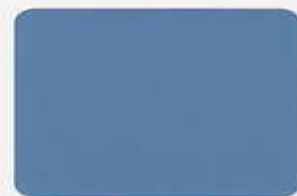
Lobelia

**0013**



Calm

**0345**



Seaquest

**9979**



All colours are intermixable. Colours presented are as close as modern printing techniques allow.  
 Semua warna boleh dicampur-aduk. Warna yang tertera adalah sehampir mana yang dibenarkan oleh teknik pencetakan moden.  
 所有颜色皆可混合。所示色彩是现代印刷技术所能达至的最接近的颜色。

Super Sicolux is a top quality emulsion paint that dries to give an attractive low sheen and is suitable for all interior and exterior masonry substrates.

**Surface Preparation:** Wall surfaces to be painted must be clean and free from loose and flaking materials.

**Thinning:** Super Sicolux is ready to use. The paint can be thinned 5-10% by volume with water to assist application.

**Application:** Super Sicolux can be applied by brush, roller or spray.

**Drying Time:** Approximately 2 hours.

**Number Of Coats:** 2 coats.

**Coverage:** Approximately 13.5 sq metres per litre.

**Cleaning Up:** Clean with clean water immediately after use.

Super Sicolux adalah cat emulsi bermutu tinggi yang menghasilkan kilatan lembut yang menarik apabila kering dan ianya sesuai untuk permukaan dinding di dalam dan di luar bangunan.

**Persediaan Pada Permukaan:** Pastikan permukaan dinding yang akan dicat dalam keadaan bersih, kering dan bebas dari kesan varnis.

**Pencairan:** Super Sicolux sedia digunakan. Cat boleh dicairkan 5-10% dengan air bagi memudahkan kerja-kerja mengecat.

**Penggunaan:** Super Sicolux boleh digunakan dengan berus, penggelek atau semburan.

**Tempoh Pengeringan:** Anggaran 2 jam.

**Jumlah Lapisan:** 2 lapisan.

**Kadar Luas Penggunaan:** Anggaran 13.5 meter persegi seliter.

**Pembersihan:** Bersihkan dengan air sebaik sahaja selepas digunakan.

超级丝可丽是高品质的乳胶漆，干透后给予室内及室外的石工一层优雅浅淡的光泽。

表层处理：涂漆的墙面必须清洁并且无松脱和剥落的物质。

稀释：超级丝可丽可即时应用，根据施工情况，可稀释漆容量 5 - 10% 的水。

应用方法：超级丝可丽可以毛刷，滚筒或喷射方式涂漆。

干透时间：大约2小时。

涂漆层数：2层。

用量：每公升大约可涂漆13.5平方公尺。

清洗：使用后需即刻以清水清洗。

Also available from:

